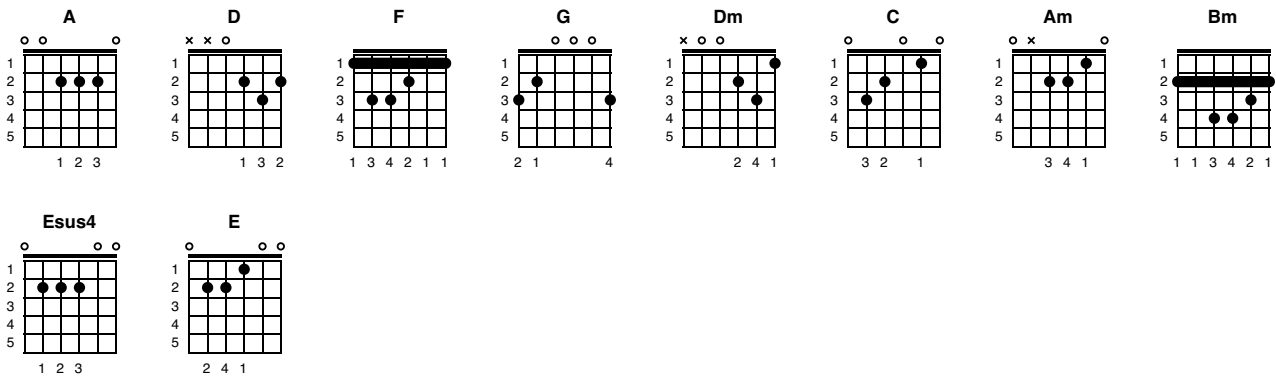


Lady Madonna

Tonart A



1. Strophe:

A D A D
Lady Madonna, children at your feet,
A D F G A
Wonder how you manage to make ends meet?
A D A D
Who finds the money when you pay the rent?
A D F G A
Did you think that money was hea-ven sent?

Chorus:

Dm G
Friday night arrives without a suitcase,
C Am
Sunday morning creeps in like a nun
Dm G
Monday's child has learned to tie his bootlace,
C Bm Esus4 E
See how they run

2. Strophe:

A D A D
Lady Madonna, baby at your breast,
A D F G A
Wonder how you manage to feed the rest.

3. Strophe:

A D A D
Lady Madonna, lying on the bed,
A D F G A
Listen to the music playing in your head.

Chorus:

Dm G
Tuesday afternoon is never ending,
C Am
Wednesday morning papers didn't come.
Dm G
Thursday night your stockings needed mending.
C Bm Esus4 E
See how they run!

Lady Madonna- Beatles

Melodie

Strophe

A D

TAB 4/4

A D

2 2 0 4 2

A D

2 2 0 2 2 0 1 2

F G A

1 0 1 2 2

Refrain

Dm

3 3 3 1 3 3 3 1

G

3 0 3 0

1.

C

A guitar fretboard diagram for a C major chord. The diagram shows a six-string guitar with a vertical bar across all strings at the first fret. Fingering numbers are placed above the strings: 1 for the first string, 1 for the second, 1 for the third, 1 for the fourth, 1 for the fifth, and 3 for the sixth. A final fret marker is at the open position (0) for the sixth string.

Am

A guitar fretboard diagram for an A minor chord. The diagram shows a six-string guitar with a vertical bar across all strings at the second fret. Fingering numbers are placed above the strings: 2 for the first string, 0 for the second, 1 for the third, and 2 for the fourth. The fifth and sixth strings are open (0). A double bar line is at the end of the diagram.

2.

C

Bm

A guitar fretboard diagram showing two chords: C major and B minor. The diagram is divided into four measures by vertical bar lines. Measure 1: C major chord, with a vertical bar across all strings at the first fret and a '0' above the first string. Measure 2: B minor chord, with a vertical bar across all strings at the second fret, and '2' above the first string and '3' above the third string. Measure 3: C major chord, with a vertical bar across all strings at the first fret, and '0' above the first string, '3' above the second string, and '2' above the third string. Measure 4: C major chord, with a vertical bar across all strings at the first fret, and '0' above the first string, '0' above the second string, and '1' above the third string. A double bar line is at the end of the diagram.

Lady Madonna- Beatles

Bass Begleitung

Strophe

A D H

TAB 4/4

0 0 3 4 | 0 0 3 4 2

A D H

0 0 3 4 | 0 0 3 4 2

A D

0 0 3 4 | 0 0 2 2

F G A

3 3 0 0 | 2

Refrain

Dm

0 0 3 3 | 2 2 0 0

G

3 3 1 1 | 0 0 0 0

1.

C

Am

2.

C

Bm

E

Lady Madonna- Beatles

Bass Begleitung

Strophe

A D H

A D H

A D

F G A

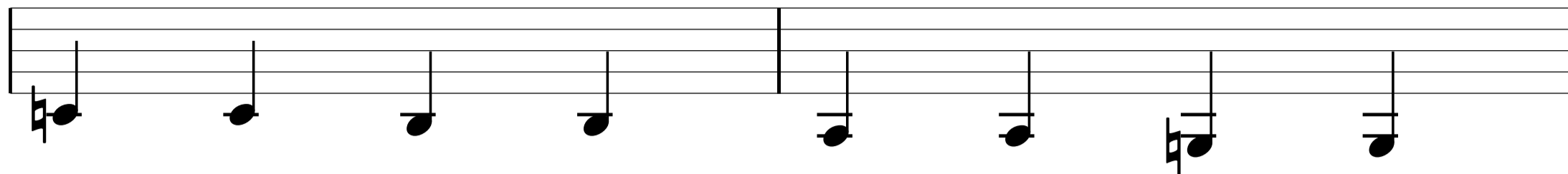
Refrain

Dm

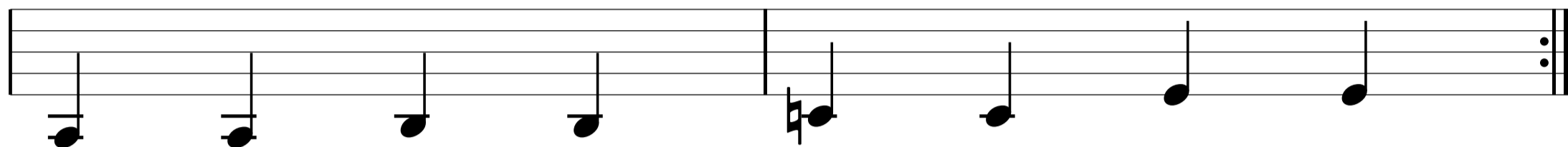
G

1.

C



Am

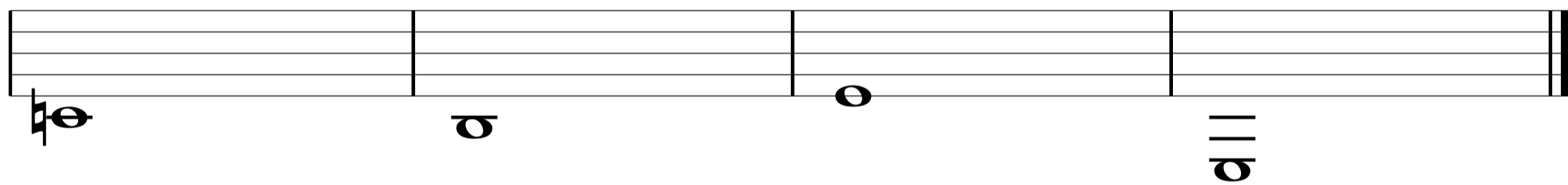


2.

C

Bm

E



Lady Madonna- Beatles

Melodie

Strophe

A D

A D

A D

F G A

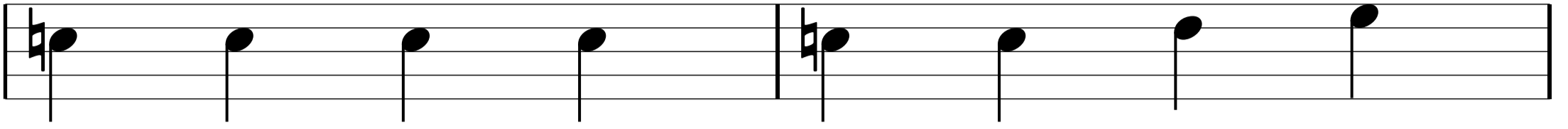
Refrain

Dm

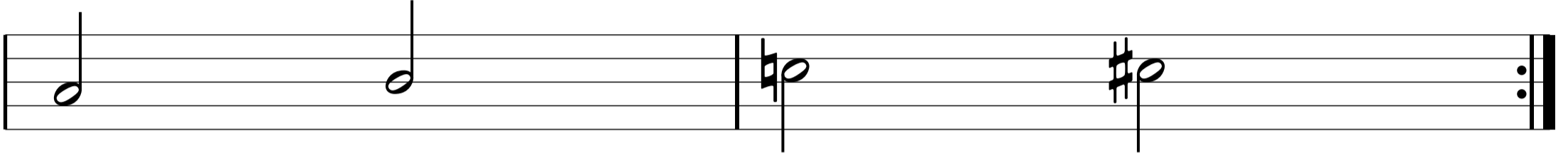
G

1.

C



Am



2.

C

Bm

