

Human Nature

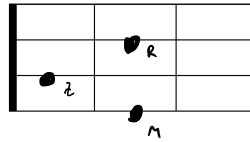
Michael Jackson

$$F\#m = F\#m7 = D/C\#$$

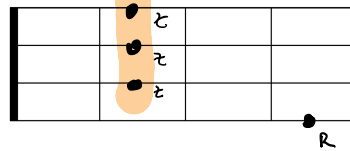
Tonart A

Intro:

| G A |
 | Fmaj7 Em7 |
 | G A |
 | Fmaj7 Em7)

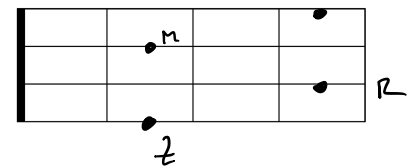


Bm



$$Em7 = Em = Em9$$

Fmaj7



1. Strophe:

| G A | G A |
 Looking out, across the night-time;
 | G A | G A |
 The city winks a sleepless eye.
 | G A | G A |
 Hear her voice, shake my window;
 | G F#m7 | Em7 A |
 Sweet se-duc-ing sighs.

Anschlag Intro u. Strophe:

G A
 ↓ ↘ ↑ ↓ ↓ ↘ ↑ ↑ ↓ ↓ ↑

Fmaj7 Em
 ↓ ↘ ↑ ↓ ↓ ↘ ↑ ↑ ↓ ↓ ↑

2. Strophe:

| G A | G A |
 Get me out, into the night-time;
 | G A | G A |
 Four walls won't hold me, to-night.
 | G A | G A |
 If this town, is just an apple;
 | G F#m7 | Em7 A |
 Then let me take a bite. (If they say);

Anschlag Chorus:

G A
 ↓ ↘ ↑ ↓ ↓ ↘ ↑ ↑ ↓ ↓ ↑
 x x

D D/C# Bm A
 ↓ ↘ ↓ ↘ ↓ ↘ ↓

G F#m7
 ↓ ↘ ↑ ↓ ↓ ↘ ↑ ↑ ↓ ↓ ↑
 x x

Em7 Bm
 ↓ ↘ ↑ ↓ ↓ ↘ ↑ ↑ ↓ ↓ ↑

Chorus:

G A D D/C# Bm A
 Why? why? Tell them that its human nature.
 | G F#m7 | Em7 Bm |
 Why? why? Does he do me that way? (If they say);
 G A D D/C# Bm A
 Why? why? Tell them that its human nature.
 | G F#m7 | Em7 A |
 Why? why? Does he do me that way?

3. Strophe:


G A G A
Reaching out, to touch a stranger;
G A G A
Electric eyes are every-where.
G A G A
See that girl; she knows I'm watching,
G F#m7 Em7 A
She likes the way I stare. (If they say)

Chorus:

G A D D/C# Bm A
Why? why? Tell them that its human nature.
G F#m7 Em7 Bm
Why? why? Does he do me that way? (If they say);
G A D D/C# Bm A
Why? why? Tell them that its human nature.
G F#m7 Em7 A
Why? why? Does he do me that way?

| Em7 Bm |
I like livin' this way,
| Em7 Bm | Em9 A → ↓ ↓ ↕ ↑ ↑ ↓ ↓ ↕ ↑ ↑ ↓ ↓ ↑
I like lovin' this way. That way.

Intro:

→  Im Intro Em7 mit G ersetzen

| G A |
| Fmaj7 Em7 |
| G A |
| Fmaj7 Em7)

5. Strophe:

G A G A
Looking out, a-cross the morning,
G A G A
The city's heart begin to beat.
G A G A
Reaching out, I touch her shoulder;
G F#m7 Em7 A
I'm dreaming of the street. (If they say)